



RASHTRA NIRMAN MAIN SAMARPIT!

A-ONE GOLD

CI, GP, MS STEEL PIPES & TUBE
GALVANIZED COIL

THE EPITOME OF A STRONG BEGINNING





ABOUT US

At A-One Steel Group, iron's enduring and lasting strength is employed to fuel innovation in various sectors and industries.

Established in 2009 by Mr. Krishan Kumar Jalan, Mr. Jullian Jalan, and Mr. Sandeep Kumar Jalan, A-One Steel Group aspires to deliver unrivalled steel quality to encourage future advancements.

A-One Steel Group expanded to MS billets and TMT bars in 2012, and continuing the journey of expansion, in 2017, A-One Steel Group acquired an integrated plant in Bellary. This facility is the epicentre of converting iron ore into top-notch steel and houses a 22 MW power plant.

As pioneers in Karnataka, the group introduced direct hot charging of billets. Further, through a collaborative 230 MW solar and wind energy joint venture, our emphasis lies on utilising state-of-the-art quality and environmental sustainability.

A-One Steel Group's comprehensive facility encompasses the manufacturing of sponge iron, power, furnaces, mills, coils, tubes, and various other components. Through our operations, we not only generate environmentally friendly energy but also impact lives on a global scale.

We Integrate The 3Ms Business Model



MAN

Best skilled manpower



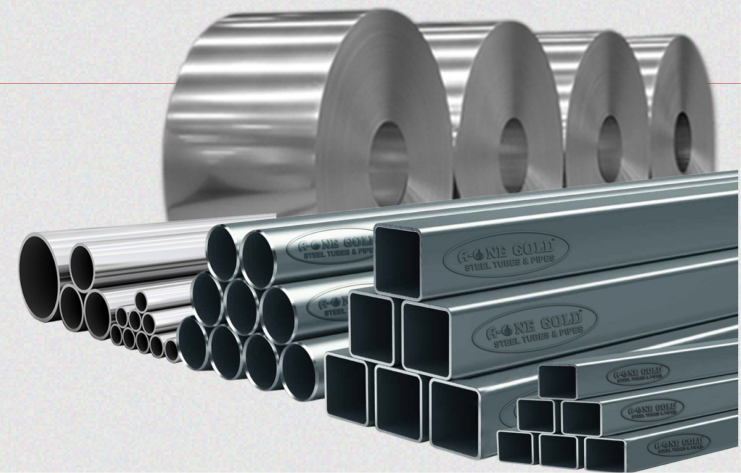
MATERIAL

Best quality raw material - BIS certified



MACHINERY

Latest technology and advanced production equipments



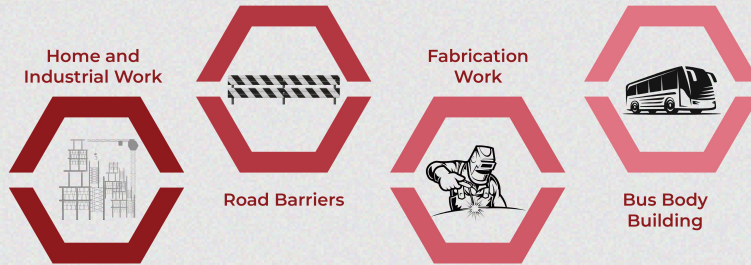


A-ONE GOLD GP PIPES

Pre-galvanised (GP) pipes are the best in the business for open channels and truss construction. We have a wide range of GP pipes and tubes.

- **Thickness:** 1.2 to 2.9mm
- **Size range:** 26.6 mm OD to 114.3 mm OD, 20X20 to 100X100, and 40X20 to 122X61 that can form to top-notch quality.

A-ONE GP pipes are widely used for:



Advantages of A-One Gold GP Pipes

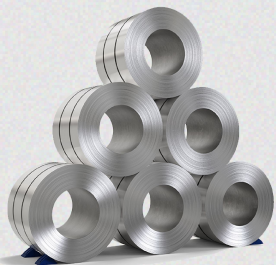


A-ONE GOLD GP COIL

Cold rolling is the process of compressing and hardening metal by running it through rollers at lower temperatures. This process increases yield, strength, and hardness. Cold rolling of metal strips is a distinct specialised subset of the steel industry. With the use of this process, thinner steel layers with accurate measurements and improved surface quality can be produced. A-One produces superior sublime steel through the CRM process which meets a variety of application requirements. The Continuous Galvanizing Line (CGL) is used to coat steel strips with zinc or zinc/aluminium to increase their corrosion resistance. It is optional to undertake galvanizing to alloy the coating into the steel substrate.

However, A-One specialises in galvanizing lines which imparts the steel with greater resistance, which is suited for the coastal climate. The quality of corrosion-resistant steel by A-One Steel is a testament to our highly advanced galvanizing procedures.

Advantages of A-One Gold GP Coil





PRODUCT RANGE

| PRE GALVA GP PIPES (ROUND) - IS:3601 | | | | | | | | | |
|--------------------------------------|-----------|---|--------|--------|--------|--------|--------|--------|-------|
| TUBE (NB) | TUBE (OD) | THICKNESS & WEIGHT KG PER 6.0 METER LENGTH PIPE | | | | | | | |
| | | 1.2 MM | 1.4 MM | 1.6 MM | 1.8 MM | 2.0 MM | 2.5 MM | 2.9 MM | |
| 1 | 15 MM | 21.3 MM | 3.56 | 4.12 | 4.66 | 5.193 | 5.71 | 6.95 | - |
| 2 | 20 MM | 26.7 MM | 4.52 | 5.23 | 5.94 | 6.632 | 7.31 | 8.95 | 10.21 |
| 3 | 25 MM | 33.70 MM | 5.76 | 6.68 | 7.53 | 8.496 | 9.29 | 11.43 | 13.08 |
| 4 | 32 MM | 42.4 MM | 7.31 | 8.43 | 9.61 | 10.813 | 11.89 | 14.68 | 16.86 |
| 5 | 40 MM | 48.3 MM | 8.35 | 9.71 | 11.05 | 12.384 | 13.7 | 16.93 | 19.47 |
| 6 | 50 MM | 60.3 MM | - | 12.19 | 13.89 | 15.58 | 17.25 | 21.37 | 24.62 |
| 7 | 65 MM | 76.2 MM | - | - | 17.65 | 19.815 | 21.95 | 27.25 | 31.44 |
| 8 | 80 MM | 88.9 MM | - | - | 20.66 | 23.197 | 25.71 | 31.95 | 36.89 |

| PRE GALVA GP PIPES (SQUARE HOLLOW SECTION) - IS:4923 | | | | | | | | |
|--|-------------|---|---------|---------|---------|---------|---------|---------|
| S.NO. | SQUARE SIZE | THICKNESS & WEIGHT KG PER 6.0 METER LENGTH PIPE | | | | | | |
| | | 1.20 MM | 1.40 MM | 1.60 MM | 1.80 MM | 2.00 MM | 2.50 MM | 3.00 MM |
| 1 | 15*15 | 3.15 | 3.64 | - | - | - | - | - |
| 2 | 20*20 | 4.27 | 4.95 | 5.61 | 6.26 | 6.89 | - | - |
| 3 | 25*25 | 5.40 | 6.26 | 7.10 | 7.94 | 8.76 | 10.77 | 12.71 |
| 4 | 30*30 | 6.52 | 7.57 | 8.60 | 9.62 | 10.64 | 13.11 | 15.51 |
| 5 | 38*38 | 8.20 | 9.53 | 10.85 | 12.15 | 13.44 | 16.62 | 19.72 |
| 6 | 40*40 | 8.77 | 10.19 | 11.60 | 12.99 | 14.38 | 17.79 | 21.13 |
| 7 | 50*50 | 11.01 | 12.81 | 14.59 | 16.36 | 18.14 | 22.47 | 26.74 |
| 8 | 72*72 | 15.95 | 18.54 | 21.18 | 23.44 | 26.30 | 32.76 | 39.10 |
| 9 | 100*100 | 22.24 | 25.91 | 29.57 | 33.21 | 36.84 | 45.87 | 54.82 |

FOR ROUND STEEL TUBE & PIPE AS PER IS: 1161 & 3601

| TOLERANCES | |
|------------------------------------|--------------|
| THICKNESS ALL SIZES | +/- 10% |
| UP TO AND INCLUDING 48.3 MM | +0.4/-0.8 mm |
| OVER 48.30 MM | +/- 1% |
| WEIGHT ON INDIVIDUAL | +.10% |
| WEIGHT ON INDIVIDUAL | -.8% |

| PRE GALVA GP PIPES (RECTANGULAR HOLLOW SECTION) - IS:4923 | | | | | | | | |
|---|------------------|---|---------|---------|---------|---------|---------|---------|
| S.NO. | RECTANGULAR SIZE | THICKNESS & WEIGHT KG PER 6.0 METER LENGTH PIPE | | | | | | |
| | | 1.20 MM | 1.40 MM | 1.60 MM | 1.80 MM | 2.00 MM | 2.50 MM | 3.00 MM |
| 1 | 40*20 | 6.52 | 7.57 | 8.60 | 9.62 | 10.64 | 13.11 | 15.51 |
| 2 | 50*25 | 8.20 | 9.53 | 10.85 | 12.15 | 13.44 | 16.62 | 19.72 |
| 3 | 60*40 | 11.01 | 12.81 | 14.59 | 16.37 | 18.31 | 22.47 | 26.74 |
| 4 | 80*40 | 13.26 | 15.43 | 17.59 | 19.73 | 22.87 | 27.15 | 32.36 |
| 5 | 75*25 | 11.01 | 12.81 | 14.59 | 16.37 | 18.31 | 22.47 | 26.74 |
| 6 | 96*48 | - | - | 22.66 | 23.93 | 25.71 | 31.95 | - |
| 7 | 100*50 | 16.63 | 19.36 | 22.08 | 24.79 | 2.48 | 34.17 | 40.79 |
| 8 | 122*61 | 20.34 | 23.69 | 27.02 | 30.35 | 33.66 | 41.89 | 50.05 |

MECHANICAL PROPERTIES OF HOLLOW SECTION

| GRADE | TENSILE STRENGTH | YIELD STRESS | ELONGATION |
|---------|------------------|--------------|------------|
| | MPA (MIN) | MPA (MIN) | % (MIN) |
| Yst 210 | 330 | 210 | 20 |
| Yst 240 | 410 | 240 | 17 |

CHEMICAL COMPOSITION


| C% (MAX) | SI% (MIN) | MN% (MAX) | S% (MAX) | P% (MAX) | CR | MA% (MAX) |
|----------|-----------|-----------|----------|----------|------|-----------|
| | | | | | % | |
| 0.08 | 0.1 | 0.9 | 0.035 | 0.04 | 0.04 | 0.012 |

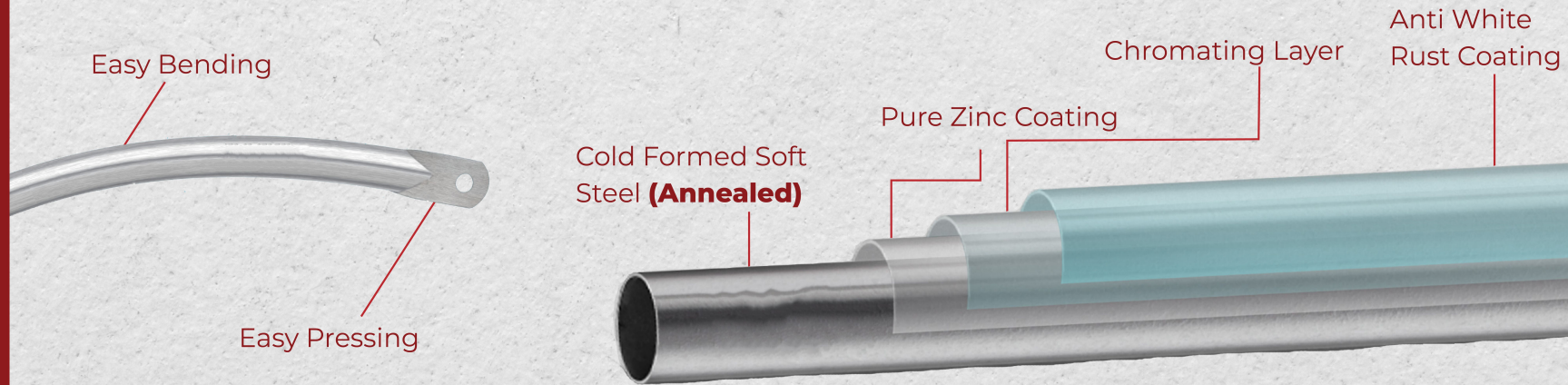
FOR HOLLOW SECTION AS PER IS: 4923

| TOLERANCES | |
|----------------------------------|--|
| THICKNESS ALL SIZES | +/- 10% |
| OUTSIDE DIMENSION OF SIDE | 1% with a minimum of +/- 0.5mm |
| WEIGHT ON INDIVIDUAL | +.10% |
| WEIGHT ON INDIVIDUAL | -.8% |
| ON LOTS OF 10 TONNES | +/-7% |
| SQUARENESS OF CORNERS | 90° +/-2° |
| RADII OF THE CORNERS | 3t, Max (where "t" is the thickness of the tube) |
| LENGTH | +6/-0mm |

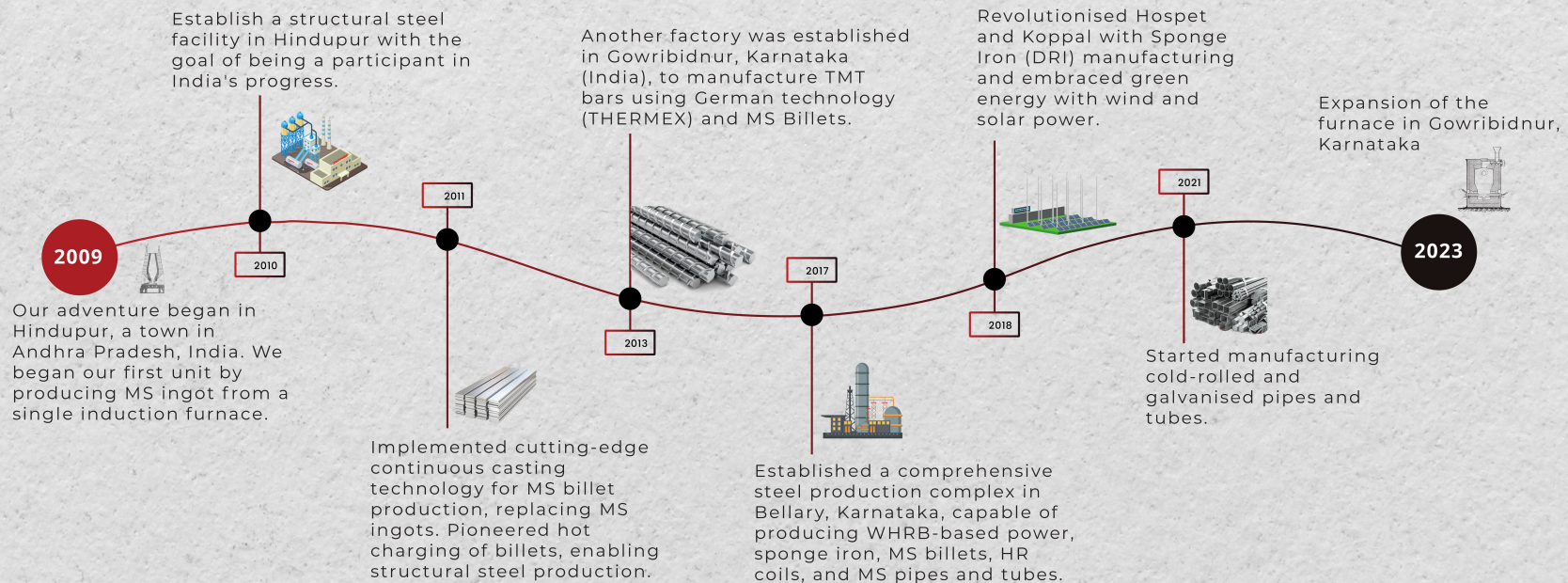


DISTINCTIVE SELLING POINT

- **Ultimate Protection:** 120 GSM Galvanization Coating
- **Stringent International Testing:** Assured Quality  approved
- India's leading producer of PreGalva (GP) pipes and tubes, PreGalva (GP) coil



EVOLUTION





MAJOR APPLICATIONS



BUS BODY



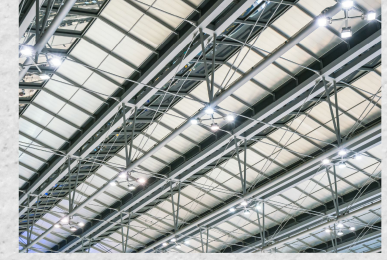
GRILL



CABLE TRAY



GATE



PEB STRUCTURE

GET IN TOUCH

Corporate Office :

A-ONE GOLD PIPES AND TUBES PRIVATE LIMITED

A-ONE HOUSE # 326, CQAL LAYOUT

Ward No.8, Sahakar Nagar

Bengaluru-560092

Karnataka, India

Phone: 080-45646000

Work :

A-ONE GOLD PIPES AND TUBES PRIVATE LIMITED

108/1, Sidiginamola Village Alur Road,

Bellary- 583111

Karnataka, India

E-Mail: gpsales@aonesteelgroup.com

Customer Care: 99000 31000

Web site: www.aonesteelgroup.com